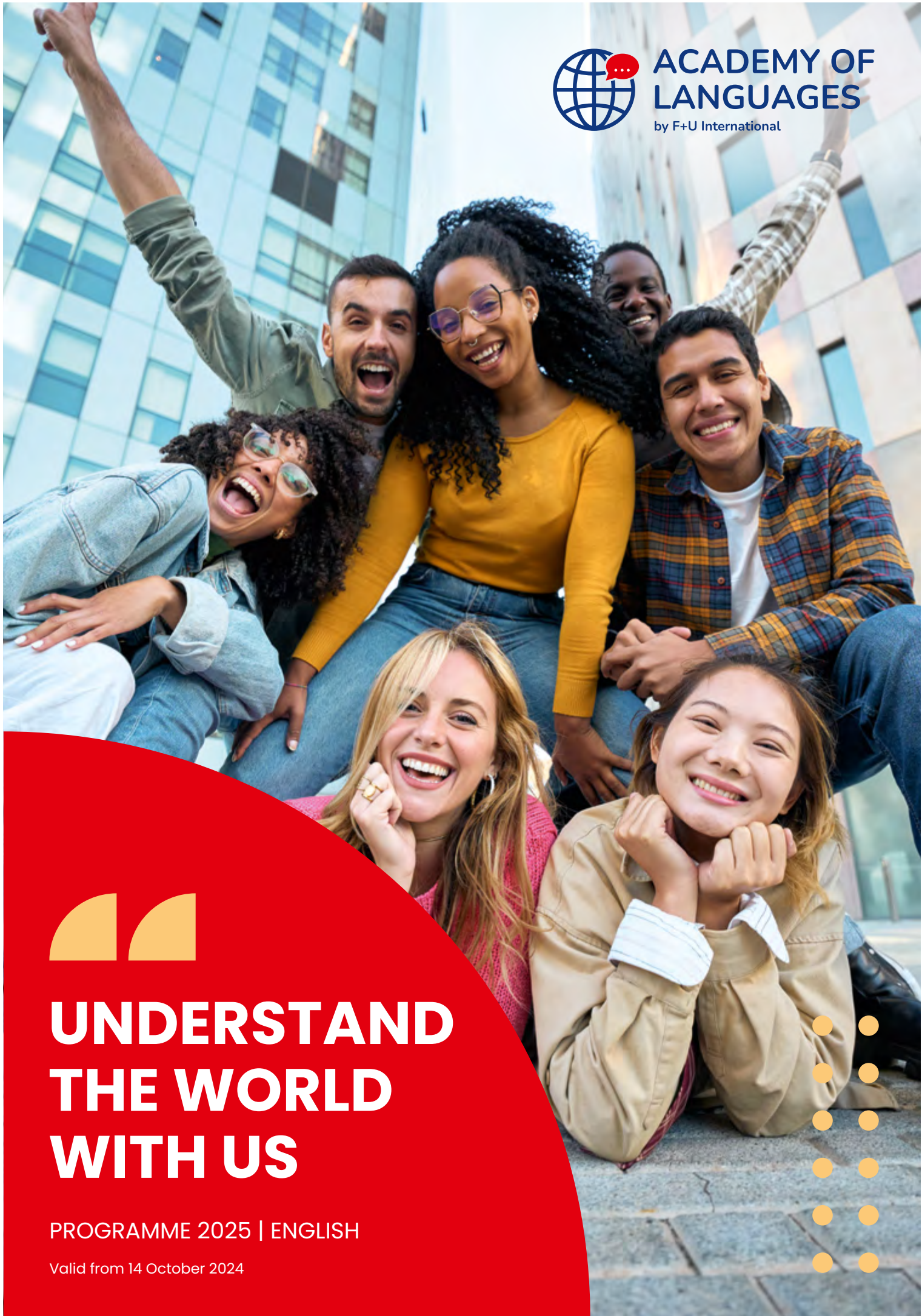




**ACADEMY OF  
LANGUAGES**

by F+U International



# UNDERSTAND THE WORLD WITH US

PROGRAMME 2025 | ENGLISH

Valid from 14 October 2024





click here for more information

# WELCOME TO OUR LANGUAGE SCHOOL

**Location:** The Academy of Languages is located in Heidelberg, a historic city that has attracted artists and scholars for centuries.

**Internationality:** Over 10,000 participants from 100+ countries annually.

**Languages:** Courses in German, English and 25+ other languages, face-to-face and online courses.

**Course variety:** Intensive morning and afternoon classes, evening courses for professionals and tailor-made individual coaching for companies and language enthusiasts.

**Test centre:** The school enables students to take a variety of internationally recognised language exams, including TestDaF, telc, TOEFL®, IELTS and many others.

**Accommodation:** Over 300 rooms are available in our student residences, apartments and host families.



# GERMAN COURSES FOR ADULTS



click here for more information



## START OF COURSE

**No. 1:** For all levels (A2 to C1). Entry possible every Monday throughout the year, also as a lateral entry.

For beginners: 07.01, 03.03, 05.05, 07.07, 04.08, 01.09, 03.11

**No. 2 – 6:** For all levels (A2 to C1) C2 on request. Entry possible every Monday throughout the year, also as a lateral entry.

For beginners: 07.01, 03.02, 03.03, 07.04, 05.05, 02.06, 07.07, 21.07, 04.08, 01.09, 06.10, 03.11, 01.12

### No. 7 – 8: Crash courses

**TestDaF:** 07.04, 21.04, 29.09  
**Telc C1 Hochschule:** 31.03, 28.04, 29.09

**No. 9 – 10:** For all levels (A2 to C2) Entry possible every Monday throughout the year, also as a lateral entry.

For beginners:  
**Presence:** 03.02, 07.04, 02.06, 01.09, 03.11  
**Online:** 04.02, 08.04, 03.06, 02.09, 04.11

**10%** Family discount

## INTENSIVE GERMAN COURSES

Our German courses stand for rapid progress and success in language acquisition. This applies to young adults who want to pursue a university career in Germany, to professionals who want to boost their career with improved language skills or to language enthusiasts who want a short break from everyday life to immerse themselves in a foreign language.

We recommend the following examination dates to align with the courses:

**TestDaF:** 15.05, 03.06, 12.11  
**telc C1 Hochschule:** 10.05, 07.06, 08.11

## EVENING COURSES

Enhance your professional skills in our evening courses, improve your career opportunities and enjoy the flexibility of relaxed learning after a busy day.

## CRASH COURSES

These language courses combine the ideal preparation with an internationally recognised language certificate for admission to a German university.

## REGISTRATION FEE (only for first – time participation)

1 person: €60  
for 2 people: €35/person  
for 3 people: €30/person  
for 4 or more people: €25/person.

## INTENSIVE COURSES GERMAN\*

| No. | Course name                            | Lesson type | Description  | TH/week | Course times Monday to Friday                       | Flexible course duration (Course fees per week, discounts only with prepayment) |            |             |             |
|-----|--|-------------|--|---------|---|---|------------|-------------|-------------|
|     |  |             |  |         |   | 1 – 6 wks   | 7 – 16 wks | 17 – 29 wks | From 30 wks |
| 1   | Intensive course 20                    | Online      | Standard German A1 – C1 (C2 on request)  | 20      | 09:00 – 12:15                                       | €175  | €150       | €130        | €120        |
| 2   | Intensive course 20                    | Presence    | Standard German, optional examination preparation from C1                                      | 20      | 09:00 – 12:15                                       | €215  | €190       | €165        | €150        |
| 3   | Intensive course 20 + Module course 10 | Presence    | Combination of standard German and exam preparation specialisation from C1                     | 30      | 09:00 – 12:15<br>13:00 – 14:30                      | €270  | €245       | €220        | €205        |
| 4   | Intensivkurs 30                        | Presence    | Standard German: Fast progression. Ideal language training before starting university          | 30      | 09:00 – 12:15<br>13:00 – 14:30                      | €270  | €245       | €220        | €205        |
| 5   | Superintensivkurs 35                   | Presence    | Standard German <b>plus 5</b> individual lessons per week; (optional exam preparation from C1) | 35      | 09:00 – 12:15<br>13:00 – 14:30<br>IL by arrangement | €435  | €410       | €385        | –           |
| 6   | Module course 10                       | Presence    | Exam preparation specialisation from C1 or grammar and conversation from A2                    | 10      | 13:00 – 14:30                                       | €110  | €105       | €95         | €85         |

## CRASH COURSES\*

| No. | Course name                                      | Lesson type | Description   | TH/week | Course times Mon to Fri | Course duration: 6 weeks. Package price incl. examination | Examination dates   |
|-----|--|-------------|---|---------|-------------------------|---|---------------------|
| 7   | Crash course exam preparation TestDaF            | Presence    | Intensive exam preparation incl. TestDaF exam. Prerequisite: from C1            | 20      | 14:45 – 18:00           | €1,145 (for external students: €1,285)                    | 15.05, 03.06, 12.11 |
| 8   | Crash course exam preparation telc C1 Hochschule | Presence    | Intensive exam preparation incl. Telc C1 Hochschule exam. Prerequisite: from C1 | 20      | 14:45 – 18:00           | €1,145 (for external students: €1,285)                    | 10.05, 07.06, 08.11 |

## EVENING COURSES\*

| No. | Course name | Lesson type | Description     | TH/week | Course times 18:30 – 20:00 | Flexible course duration (Course fees per week, discounts only with prepayment) |            |             |
|-----|-------------|-------------|-----------------|---------|----------------------------|---|------------|-------------|
|     |             |             |                 |         |                            | 1 – 6 wks   | 7 – 16 wks | from 17 wks |
| 9   | Main course | Presence    | Standard German | 4       | Mon + Wed                  | €45   | €40        | €35         |
| 10  | Main course | Online      | Standard German | 4       | Tue + Thu                  | €45   | €40        | €35         |

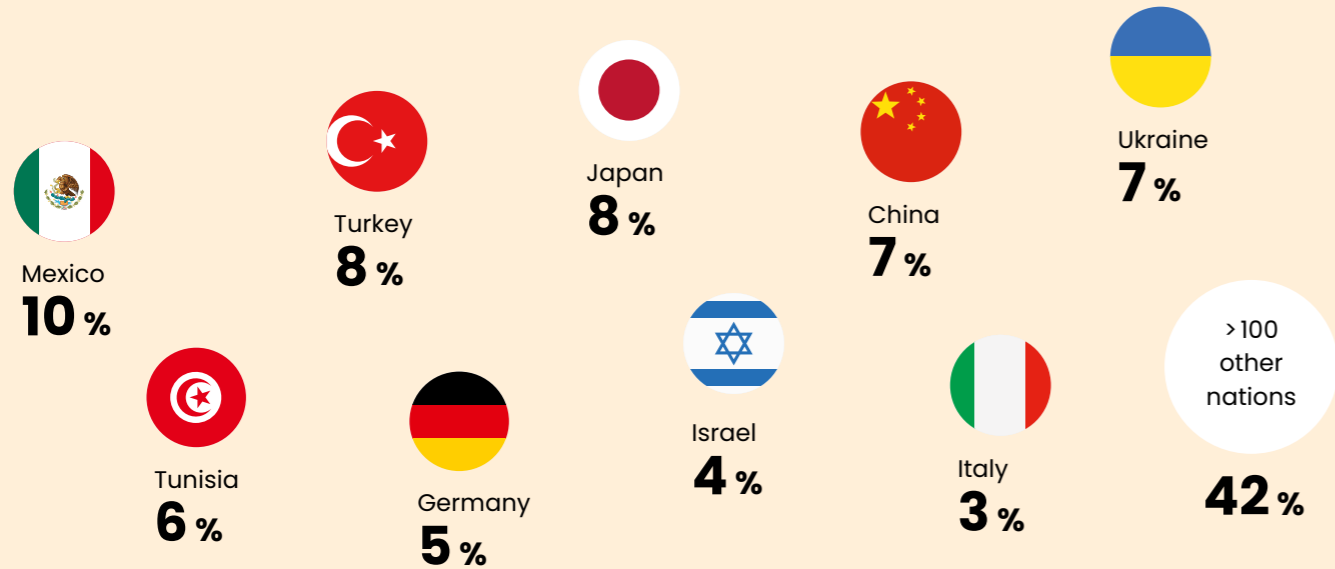
\*Course delivery guarantee: At the request of the participants, we will also hold the courses if the minimum number of six participants is not reached: Reduction of the course by 25% for three to five participants and by 50% for only one or two participants.

# INSIGHTS AND TRENDS

## Focus on our language students

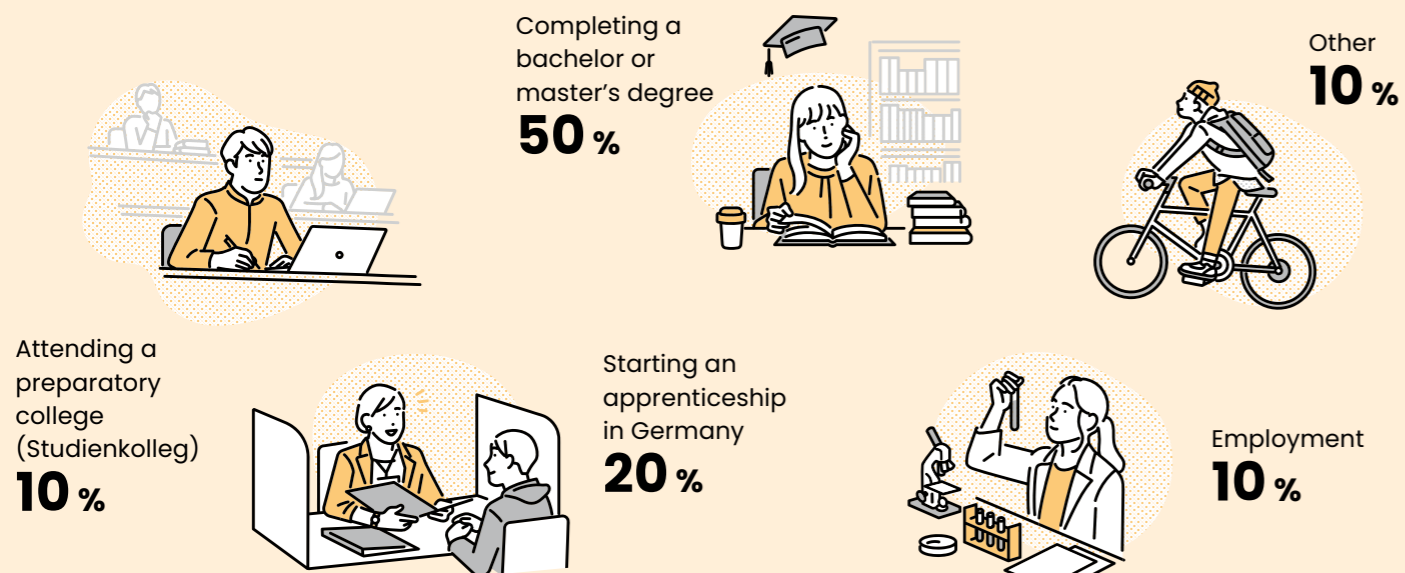
In 2024, we welcomed over 10,000 students. On average, they spent 20 weeks learning German with us and living in our student residences.

### INTERNATIONAL INSIGHTS: LANGUAGE STUDENTS' COUNTRIES OF ORIGIN



### WHAT ARE OUR ALUMNI DOING TODAY?

We remain in close contact with our alumni and are delighted that many of them are now living in Germany. They have taken the following paths:



## Fit for university – your pathway to studying in Germany

Are you looking for the ideal preparation for your university career?

### OUR STUDIENKOLLEG PREPARATORY COLLEGE OFFERS

- Efficient preparation for the assessment test (Feststellungsprüfung)
- Course material and participation in the telc C1 Hochschule exam included
- Entry without an obligatory entrance examination

| No. | Course name   | Lesson type   | Description   | Duration | TH/week | Course start             | Price  |
|-----|---------------|---|---|----------|---------|--------------------------|--------|
| 11  | Studienkolleg | Weeks 1–20: Online (presence on request)<br>Weeks 21–28: Presence (online participation on request) | Preparation for the assessment test (specialisation course W, T or M); prerequisite for participation: valid B2 certificate or equivalent | 28 weeks | 25      | 10.03.2025<br>08.09.2025 | €6,950 |

### PATHWAY-PACKAGES

Do you still need a B2 certificate to take part in the Studienkolleg? With our pathway packages we offer cost-effective, comprehensive, hassle-free programmes for an optimal start to university in Germany.

| No. | Package*   | Duration | Recommended start before the Studienkolleg course begins*** | Price   |
|-----|--|----------|---|---------|
| 12  | Online intensive course** German B2+Studienkolleg          | 40 weeks | min. 12 weeks   | €7,990  |
| 13  | Online intensive course** German B1+B2+Studienkolleg       | 48 weeks | min. 20 weeks   | €9,450  |
| 14  | Online intensive course** German A2+B1+B2+Studienkolleg    | 56 weeks | min. 28 weeks   | €10,460 |
| 15  | Online intensive course** German A1+A2+B1+B2+Studienkolleg | 64 weeks | min. 36 weeks   | €11,470 |

\*Presence-based participation on request

\*\*Teaching material included

\*\*\*Start dates see p. 4, course no. 1

### ANP PRE-COURSE

Your ideal preparation for the state Studienkolleg entrance test!

| No. | Course name            | Lesson type | Description  | Duration | TH/week | Course times             | Course start             | Price   |
|-----|------------------------|-------------|--|----------|---------|--------------------------|--------------------------|---|
| 16  | ANP preliminary course | Hybrid      | Preparation course for the entrance examination of state Studienkolleg colleges (all specialisation courses); Modules: Maths, German | 4 weeks  | 20      | Mon – Fri, 13:00 – 16:15 | 03.07.2025<br>03.11.2025 | €800 (can also be booked as a single module; €400/module; for existing customers €375/module) |

# ENGLISH COURSES FOR ADULTS



## INTENSIVE ENGLISH COURSES

Our English courses stand for rapid progress and success in language acquisition. This applies to young adults who wish to pursue an international academic career or prepare for a study abroad programme, for professionals who want to give their career a boost with improved language skills, or for language enthusiasts who want a short break from everyday life to immerse themselves in the foreign language.

### COMBINATION COURSE GERMAN PLUS ENGLISH

The combination courses are suitable for anyone who has a passion for languages and would like to take on the intensive challenge of learning two major foreign languages at the same time – this is the ideal daily routine for double language success.

### REGISTRATION FEE (only for first-time participation)

1 person: €60  
for 2 people: €35/person  
for 3 people: €30/person  
for 4 or more people: €25/person.

**10%** Family discount

### START OF COURSE

**No. 17 – 20:** For the levels A2 to B2: Entry possible every Monday throughout the year. (C1 and C2 on request)

For beginners: 07.04, 01.09

**No. 21 – 22:** The possible course start dates depend on the starting dates of the German and English courses listed on pages 4 and 8.



click here for more information



## INTENSIVE ENGLISH COURSES\*

| No. | Course name                            | Lesson type | Description  | TH/week | Course times Monday to Friday                       | Flexible course duration (Course fees per week, discounts only with prepayment) |          |           |             |
|-----|--|-------------|--|---------|---|---|----------|-----------|-------------|
|     |  |             |  |         |   | 1-6 wks   | 7-16 wks | 17-29 wks | from 30 wks |
| 17  | Intensive course 20                    | Presence    | Standard English, from B2 optional Business English  | 20      | 09:00 – 12:15                                       | €215  | €190     | €165      | €150        |
| 18  | Intensive course 20 + module course 10 | Presence    | Standard English, from B2 optional Business English, option from C1: in conjunction with exam preparation                | 20 + 10 | 09:00 – 12:15<br>13:00 – 14:30                      | €270  | €245     | €220      | €205        |
| 19  | Superintensive course 35               | Presence    | Standard English, plus 5 lessons Individual lessons per week; from B2 Business English from C1 optional exam preparation | 35      | 09:00 – 12:15<br>13:00 – 14:30<br>IL by arrangement | €435  | €410     | €385      | –           |
| 20  | Module course 10                       | Presence    | Grammar and Conversation from A2   | 10      | 13:00 – 14:30                                       | €125  | €115     | €110      | –           |

## COMBINATION COURSE GERMAN PLUS ENGLISH\*

| No. | Course   | Lesson type | TH/week. | Course days      | Course times                   | Flexible course duration (Course fees per week, discounts only with prepayment) |          |             |
|-----|--|-------------|----------|------------------|--------------------------------|---|----------|-------------|
|     |  |             |          |                  |                                | 1-6 wks   | 7-16 wks | from 17 wks |
| 21  | Intensive course 20 (German) plus module course 10 (English)                           | Presence    | 20 + 10  | Monday to Friday | 09:00 – 12:15<br>13:00 – 14:30 | €270  | €245     | €220        |
| 22  | Intensive course 20 (English) plus module course 10 (German, exam preparation from C1) | Presence    | 20 + 10  | Monday to Friday | 09:00 – 12:15<br>13:00 – 14:30 | €270  | €245     | €220        |

\*Course delivery guarantee: At the request of the participants, we will also hold the courses if the minimum number of six participants is not reached: Reduction of the course by 25% for three to five participants and by 50% for only one or two participants.

# INDIVIDUAL COURSES

(presence | online | in-house)



## BASIC LANGUAGE COURSES

Our basic language courses are aimed at a wide range of learners, including pupils, students, language enthusiasts and seniors who wish to benefit from a tailored approach and individual learning objectives.

## SPECIAL LANGUAGE COURSES

In our special language courses, participants benefit from our tailor-made programme specifically designed for professional languages (such as business, medicine, nursing, hotel and tourism, gastronomy, IT, engineering, office communication and others). Enhance your professional skills and communicative effectiveness in a globalised business world with flexible course times, individualised content and highly qualified teachers who have specialised training, industry-relevant professional experience and extensive teaching experience.

## REGISTRATION FEE (only for first – time participation)

1 person: €60  
for 2 people: €35/person  
for 3 people: €30/person  
for 4 or more people: €25/person.

## LANGUAGES OFFERED

Arabic, Brazilian Portuguese, Bulgarian, Chinese, Croatian, Czech, Dutch, English, French, Georgian, German, Greek, Hungarian, Italian, Japanese, Polish, Portuguese, Romanian, Russian, Serbian, Spanish, Swedish, Turkish, Ukrainian (other languages on request).

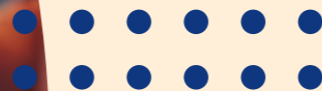
## COURSE FORMAT

Presence or online. In-house training on request.

## SURCHARGE

Weekend lessons 25%

Family discount  
**10%**



## BASIC LANGUAGE COURSES

| German*, English*, Spanish, Italian, French | 1 learner | 2 learners | 3 – 7 learners |
|---|-----------|------------|----------------|
| 1 – 49 TH of 45 minutes                     | €37       | €47        | €57            |
| From 50 lessons of 45 minutes               | €33       | €43        | €53            |
| Other languages                             | 1 learner | 2 learners | 3 – 7 learners |
| 1 – 49 TH of 45 minutes                     | €49       | €57        | €69            |
| From 50 lessons of 45 minutes               | €45       | €55        | €67            |

\*Exam preparation surcharge German 15% (TestDaF, telc, DSH), English 25% (TOEFL, IELTS)

## SPECIAL LANGUAGE COURSES

| German, English, Spanish, Italian, French | 1 learner | 2 learners | 3 – 7 learners |
|---|-----------|------------|----------------|
| 1 – 49 TH of 45 minutes                   | €67       | €86        | €103           |
| From 50 lessons of 45 minutes             | €61       | €81        | €99            |
| Other languages                           | 1 learner | 2 learners | 3 – 7 learners |
| 1 – 49 TH of 45 minutes                   | €89       | €106       | €121           |
| From 50 lessons of 45 minutes             | €85       | €100       | €115           |



click here for more information



# LANGUAGE TESTS



TOEIC®

TOEFL®



| Exam   | Language(s)  | Description   | Dates 2025   | Fee*   |
|--|--|---|--|--|
| <b>TestDaF digital</b><br>Deutsch als Fremdsprache             | German   | Required for enrolment at German universities (equivalent to the DSH).  | 06.02, 26.03, 16.04, 03.06, 07.08, 18.09, 13.11                                    | €210   |
| <b>TestDaF paper-based</b>                                     | German   | Required for enrolment at German universities (equivalent to the DSH).  | 11.03, 15.05, 16.07, 16.10   | €215   |
| <b>telc</b><br>The European Language Certificates              | German, English, Russian, (other languages on request) | Proof of foreign language skills A1 – A2, B1, B1/B2 + Beruf, C1   | 15.03, 07.06, 13.09, 06.12   | From €180<br>Minimum number of participants: 4 |
| <b>telc</b><br>B1 – B2<br>C1 Hochschule                        | German   | Proof of foreign language skills Deutsch C1 Hochschule is equivalent to the DSH and the TestDaF.  | 18.01, 15.02, 15.03, 12.04, 10.05, 07.06, 05.07, 02.08, 13.09, 11.10, 22.11, 06.12 | From €190<br>Minimum number of participants: 4 |
| <b>telc</b><br>B1/B2 Pflege                                    | German   | The examinations demonstrate the language skills required by recognition authorities and medical institutions in a specialist language context. | Dates on request, we gladly accept group requests                                  | €315<br>Minimum number of participants: 4      |
| <b>Deutsch Test für Zuwanderer (DTZ)</b>                       | German   | With this exam you prove language skills from A2 – B1. It is accepted by authorities for settlement.  | Dates on request   | €160   |
| <b>Deutsch Test für den Beruf A2 – C1 (DTB)</b>                | German   | Final examination of the DeuFöV courses. With this examination, you prove your language skills related to the world of work.                    | Dates on request   | €160   |
| <b>TestAS digital/paper-based</b><br>Test for Academic Studies | German or English                                      | Study aptitude test for international students, not yet compulsory.   | <b>Digital:</b> 19.03, 17.06, 20.11<br><b>Paper-based:</b> 18.02, 26.04, 25.10     | €210   |

\*Status August 2024



| Exam  | Language(s)       | Description  | Dates 2025  | Fee*   |
|---|-------------------|--|---|--|
| <b>onSET</b>  | German or English | Internet test (A2 – C1), result available worldwide at any time.   | Dates on request  | €25<br>Minimum number of participants: 3       |
| <b>Test WiDaF®</b><br>Test Deutsch als Fremdsprache in der Wirtschaft | German            | Standardised, job-related German test (A2 – C2).   | Dates on request  | €190   |
| <b>TOEFL iBT®</b><br>Test of English as a Foreign Language            | English           | Proof for university admission, especially for BA, MA, B.Sc, B.Eng, M.Sc, MBA programmes.  | 11.01, 08.02, 15.03, 05.04, 17.05, 14.06  | US \$245                                       |
| <b>TOEFL Junior®</b>  | English           | Testing and certification of students' current English language skills, admission criterion for certain student exchange programmes. | Dates on request  | €180   |
| <b>TOEIC®</b><br>Test Of English for International Communication      | English           | The world's most widely used English test for professional purposes.   | <b>Listening &amp; Reading and Speaking &amp; Writing</b><br>Dates on request, we gladly accept group requests  | €180 each<br>Minimum number of participants: 3 |
| <b>IELTS – International English Language Testing System</b>          | English           | Proof of sufficient English language skills for study, migration and work  | 04.01, 11.01, 25.01, 01.02, 08.02, 22.02, 15.03, 22.03, 05.04, 12.04, 26.04, 03.05, 17.05, 24.05, 07.06, 14.06, 21.06, 05.07, 19.07, 26.07, 09.08, 23.08, 13.09, 27.09, 04.10, 18.10, 25.10, 21.10, 15.11, 22.11, 06.12 | €226   |
| <b>Internal school language examinations</b>                          | German, English   | a) <b>F+U pupils:</b> €80<br>b) <b>external students:</b> €145 (incl. registration fee)  |   |  |

\*Status August 2024

# SPECIAL SERVICES AND CULTURAL PROGRAMME



click here for more information

## SPECIAL SERVICES

Our services can only be booked in conjunction with a language course. You can find more information by scanning the QR code.

### Student advisory service

Help with applications for the Studienkolleg/university (requirements: language level B1, current place of residence in Germany)  
**€350** (5 hours, each additional hour €75)

### Provisional admission

Help with the visa application process (suitable for students who are outside Germany)  
**€550**

### Dealing with authorities

Assistance with almost all administrative matters: registration and re-registration at the citizens' office, bank, health insurance, visa (prerequisite: place of residence is Heidelberg)  
**€295** (Individual service €95)

### Courses à la carte

Arrangement of special courses at local schools and clubs, e.g. football, handball, table tennis, kyudo, kendo and other sports, music lessons, floristry, etc.  
**€345**

### Music room

Music practice in our school music room, with piano.  
**€12** (60 minutes)

## CULTURAL PROGRAMME

Our cultural programme for participants in our language course programme offers unforgettable experiences. Our language students discover medieval castles, trips along the Neckar River and charming old towns in Strasbourg, Bad Dürkheim or Heidelberg, or visit the historic castles in Schwetzingen, Heidelberg and Mannheim.

The famous 'Schnitzel dinner' is the opportunity to enjoy this speciality of German cuisine. In the language café, participants enjoy cultural interaction and communication with each other in a cosy atmosphere.

Our varied cultural programme invites language students to experience unforgettable moments with us.

Registration for our events is easy at our school's administration office. Because the programme changes monthly, there is a wide choice for every participant with options for every budget.



Excursion to Europa Park: rollercoaster ride on the Silverstar.



# JUNIOR PROGRAMME

## SUMMER GERMAN AND ENGLISH COURSES (6 – 15 years)

Language courses in the morning and activities in the afternoon – children learn a foreign language through play and make new friends with participants from all over the world.

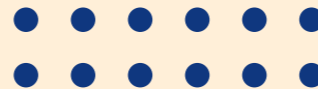
## REGISTRATION FEE (only for first – time participation)

1 person: €60  
for 2 people: €35/person  
for 3 people: €30/person  
for 4 or more people: €25/person.

## STARTING DATES

Junior programme with German course: 07.07 to 15.08  
Junior programme with English course: 04.08 to 29.08

Family discount  
**10%**



## SUMMER GERMAN AND ENGLISH COURSES (6 – 15 YEARS)

| No. | Language | Age groups                   | Levels*        | TH/wk | Class size | Course times (Mon – Fri) | Fees per week (incl. teaching material) |            | Start*                       | End   |
|-----|----------|------------------------------|----------------|-------|------------|--------------------------|---|------------|------------------------------|-------|
|     |          |                              |                |       |            |                          | 1 – 3 wks                               | From 4 wks |                              |       |
| 23  | German   | 6 – 8, 9 – 11, 12 – 15 years | A1, A2, B1, B2 | 20    | 6 – 15     | 09:00 – 12:15            | €250                                    | €215       | Every Monday 07.07 – 11.08** | 15.08 |
| 24  | English  | 6 – 8, 9 – 11, 12 – 15 years | A2, B1, B2     | 20    | 6 – 15     | 09:00 – 12:15            | €250                                    | €215       | Every Monday 04.08 – 25.08** | 29.08 |

\*Language level C1 on request. Additional individual lessons (standard): €33/45 minutes.  
\*\*Start for participants without previous knowledge, German: 07.07 and 04.08, English on request.

## MODULES

| No. | Accommodation, lunch, leisure activities                                    | Weekdays  | Time  | Fees per week |            |
|-----|---|-----------|---|---------------|------------|
|     |   |           |   | 1 – 3 wks     | From 4 wks |
| 25  | Host family accommodation (half board: Mon – Fri, full board: Sat + Sun)*** | Sun – Sat | –   | €360          | €340       |
| 26  | Lunch at school   | Mon – Fri | 12:30 – 13:30   | €115          | €110       |
| 27  | Leisure activities****  | Mon – Sat | Monday – Friday 13:30 – 17:00<br>Saturday 12:30 – 15:30 | €215          | €195       |

## PACKAGES AND ADDITIONAL MODULES

| No.                                    | Package prices  | Fees per week             |            |
|--|---|---------------------------|------------|
|  |   | 1 – 3 wks                 | From 4 wks |
| 28                                     | Language course + accommodation*** + lunch + activities****             | €850                      | €775       |
| 29                                     | Language course + lunch + activities****                                | €520                      | €470       |
| 30                                     | Language course + activities****  | €420                      | €370       |
| <b>No. Additional module: transfer</b> |   |                           |            |
| 31                                     | Group transfer from Frankfurt Airport                                   | Transfer fees see page 21 |            |
| 32                                     | Individual pick – up from Frankfurt am Main airport (others on request) | Transfer fees see page 21 |            |

\*\*\*When booking accommodation with a host family, items 26 and 27 are compulsory as the host families usually only look after the children and young people from 17:30 on weekdays. Surcharge for an English-speaking host family: €100 per week.  
\*\*\*\*Included services: Supervision, entrance tickets and transport costs as part of the activity; Saturday activities are organised for a minimum of 4 participants.



click here for more information

# OFFERS FOR GROUPS



click here for more information

## TRANSFER

We will be happy to make you an offer for a transfer from the airport (from €85/person) to your accommodation.

For individual journeys see page 21.

## ACCOMMODATION AND CATERING

You can choose between staying in a hall of residence or with a host family, and can get affordable meals in the Heidelberg University canteen or in our partner restaurant.

## CULTURE PROGRAMME

Get to know Heidelberg on a guided tour of the historic city centre or a boat trip on the Neckar, or take advantage of the countless opportunities for sporting activities. Culture lovers will also find plenty to enjoy with museum visits and much more.



Family discount  
**10%**

## INTENSIVE GERMAN AND ENGLISH COURSES

Enjoy year-round language courses for groups of eight or more learners who want to improve their foreign language skills together and experience German culture in one of Germany's most beautiful cities. Individual teaching options and diverse cultural programmes will make your language trip an unforgettable one.

**Registration fee**  
per participant: €25

**Teaching material (course book and workbook)**  
German: €45, English: €75

## INTENSIVE GERMAN AND ENGLISH COURSES

| Language(s)                                | TH/week | Course times (Mon – Fri)              | Fees per week and person* |                |
|--|---------|---------------------------------------|---------------------------|----------------|
|  |         |                                       | 8 – 14 people             | From 15 people |
| German                                     | 20      | 09:00 – 12:15                         | €175                      | €160           |
| German                                     | 30      | 09:00 – 12:15 and 13:00 – 14:30       | €220                      | €205           |
| English                                    | 20      | 09:00 – 12:15                         | €175                      | €60            |
| English                                    | 30      | 09:00 – 12:15 and 13:00 – 14:30       | €220                      | €205           |
| German main course + English module course | 20 + 10 | 09:00 – 12:15 (G)   13:00 – 14:30 (E) | €220                      | €205           |
| English main course + German module course | 20 + 10 | 09:00 – 12:15 (E)   13:00 – 14:30 (G) | €220                      | €205           |

\*Group offers for up to seven people: see pages 10 – 11.

## ACCOMMODATION AND CATERING

| Accommodation type (Occupancy in double rooms) | Shower/WC/Kitchen  | Catering                                      | Fees per week and person |
|--|--|---|--------------------------|
| Type I** hall of residence                     | On the corridor  | Self-catering                                 | €150                     |
| Type II hall of residence**                    | In the room  | Self-catering                                 | €250                     |
| Host family                                    | Shared with the family   | Half board                                    | €315                     |
| Additional service                             | Service description  | Catering                                      | Fees per person          |
| Setting up the cafeteria card                  | Heidelberg University cafeteria card (incl. refundable €5 deposit) | Valid in all Heidelberg University cafeterias | €15                      |

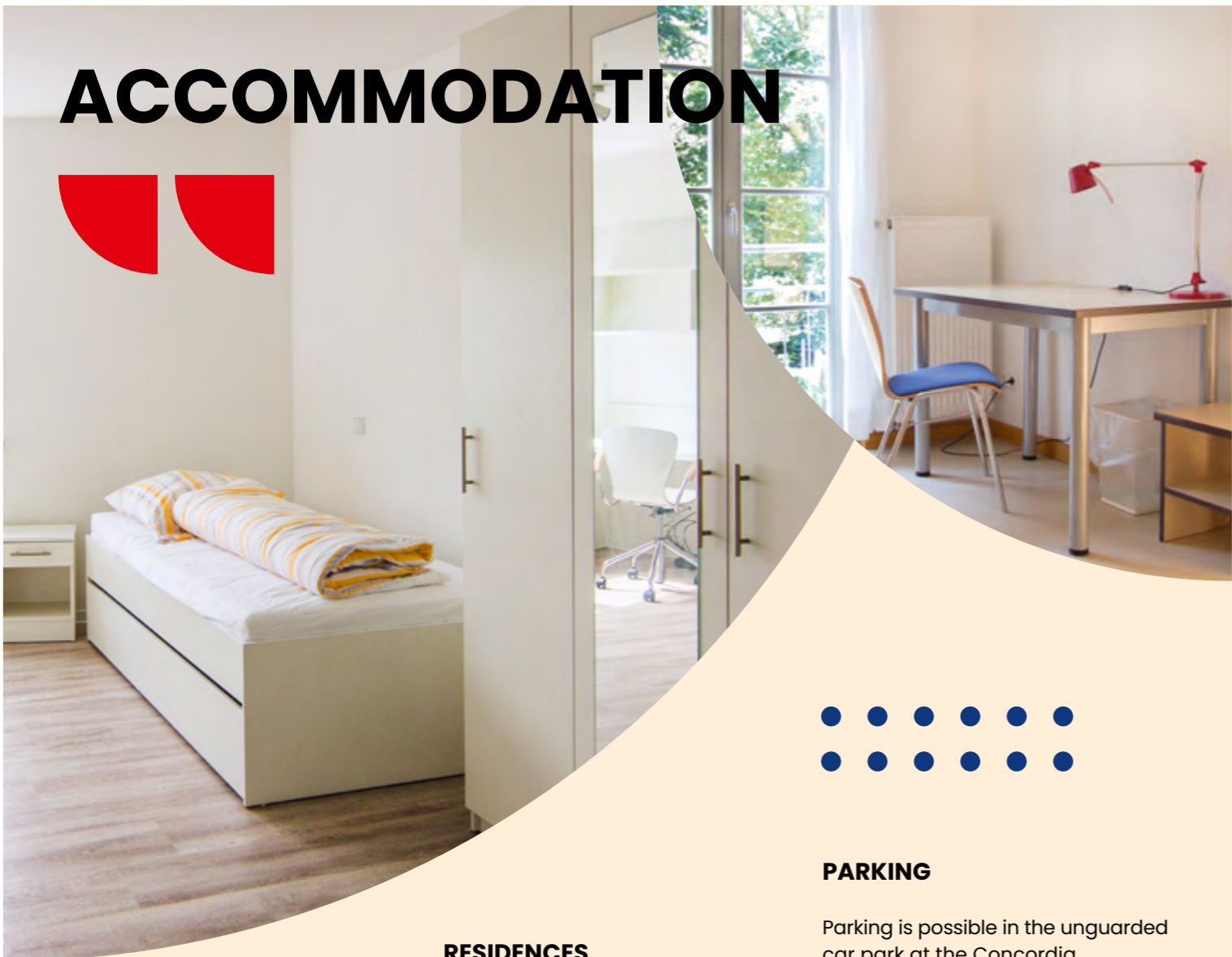
\*\*For accommodation categories see page 22.

## CULTURAL PROGRAMME

| Activity***  | Services included  | Price | Number of people |
|--|--|-------|------------------|
| Language café/F+U regular social gathering   | Accompaniment, drinks <b>not</b> included; duration: approx. 2 h                 | €10   | From 8           |
| Heidelberg city tour incl. castle tour   | Accompaniment, admission; duration: approx. 2 h                                  | €20   | From 8           |
| Neckar boat trip   | Admission, accompaniment on request; duration: approx. 1 h                       | €35   | From 8           |
| Trampolining at the Heidelberg jumping centre  | Admission, accompaniment on request; duration: approx. 1.5 h (jumping time: 1 h) | €30   | From 8           |
| Museum visit in Heidelberg (German Pharmacy Museum, Kurpfälzisches Museum, Ethnological Museum, University Museum with Student prison, Prinzhorn Collection) | Admission, accompaniment on request; duration: approx. 2 h                       | €15   | From 8           |
| Museum visit to Technoseum Mannheim  | Admission, transport, accompaniment on request; duration: approx. 4 h            | €45   | From 12          |
| Schwetzingen Palace Park   | Admission, transport, accompaniment on request; duration: approx. 4 h            | €45   | From 12          |
| Excursion to the Mercedes Museum Stuttgart   | Admission, transport, accompaniment on request; duration: approx. 5 h            | €55   | From 12          |
| Excursion to Strasbourg  | Admission, transport, accompaniment on request; duration: approx. 8 h            | €145  | From 12          |
| Excursion to Europa-Park   | Admission, transport, accompaniment on request; duration: approx. 8 h            | €170  | From 20          |

\*\*\*Your favourite activity isn't listed? Just let us know.

# ACCOMMODATION



## HOST FAMILIES

Experience a unique cultural immersion and family atmosphere during your language study trip by staying with one of our host families. Immerse yourself in the everyday life of Heidelberg families, practise your language skills in authentic surroundings and create unforgettable memories that will enrich and deepen your language experience.

**Administration fee**  
€130 (from 12 weeks: €170)

**Deposit**  
€200 (from 12 weeks: €400)

## RESIDENCES

Our modern student residences offer international language students not only comfort, but also the opportunity to live in a diverse and social environment. The options range from living together in a flatshare or, for those who want a little more privacy, to fully furnished apartments.

**Administration fee**  
€130 (from 12 weeks €170)

**Deposit**  
€200 (from 12 weeks: €400)

## TRANSFER TO ACCOMMODATION

Transfer from and to the accommodation (to be booked at the latest by Monday, 14:00 before arrival or departure), we will be happy to make you an offer for two or more people.



click here for more information

## PARKING

Parking is possible in the unguarded car park at the Concordia residence for €50/week. There is a public paid car park in the school building (approx. €195/month).

Advance booking required.

## COOKING UTENSILS

**Cooking utensils, cutlery and crockery** can be hired on request and subject to availability for a deposit of €40 and a service charge of €50. (Deposit refunded on return of complete and cleaned set.)

## HOST FAMILIES

| Category* | Catering   | Rent per week/room |      |              |      | Extra days<br>Rent per day/room |      |
|-----------|------------|--------------------|------|--------------|------|---------------------------------|------|
|           |            | 1 – 6 weeks        |      | From 7 weeks |      | SGL                             | DBL  |
|           |            | SGL                | DBL  | SGL          | DBL  |                                 |      |
| HF – A    | Half board | €355               | €610 | €305         | €505 | €65                             | €115 |
| HF – A    | Breakfast  | €295               | €520 | €270         | €460 | €60                             | €100 |
| HF – A    | None       | €250               | €450 | €235         | €410 | €55                             | €90  |
| HF – B    | Half board | €280               | €485 | €265         | €460 | €60                             | €100 |
| HF – B    | Breakfast  | €240               | €415 | €225         | €385 | €55                             | €90  |
| HF – B    | None       | €215               | €370 | €210         | €355 | €40                             | €85  |

\*Our host families are divided into the categories HF-A and HF-B. In the HF-A category, you need up to 30 minutes by public transport to get to the language school. In the HF-B category, a maximum of 50 minutes. The walk to the bus stop is not included, but the bus stop is usually only a 5–10 minute walk from the accommodation. Detailed information is available on request.

## RESIDENCES

| Category** | Rent per week/room |            |              |            |               |            |               |            |
|------------|--------------------|------------|--------------|------------|---------------|------------|---------------|------------|
|            | 1 – 6 weeks        |            | 7 – 16 weeks |            | 17 – 29 weeks |            | From 30 weeks |            |
|            | SGL                | DBL        | SGL          | DBL        | SGL           | DBL        | SGL           | DBL        |
| A          | €190               | on request | €175         | on request | €155          | on request | €145          | on request |
| B          | €205               | €300       | €195         | €280       | €180          | €255       | €170          | €245       |
| B+         | €260               | –          | €240         | –          | €205          | –          | €195          | –          |
| C          | €305               | €460       | €260         | €395       | €210          | €305       | €200          | €295       |
| D          | €310               | –          | €275         | –          | €240          | –          | €225          | –          |
| E          | €355               | €565       | €305         | €480       | €250          | €390       | €240          | €370       |

\*\*Our halls of residence are divided into categories A to E. If you would like to book a specific dormitory in a category, we charge a one-off fee of €300 for this dormitory guarantee. This option is subject to availability.

## TRANSFER TO ACCOMMODATION

If travelling together (2 or more people), the people making the booking receive a 25% discount/person on the transfer price. Collections outside the pick-up times and an escort service for minors are possible on request and at an extra charge.

| Prices****                   | Ffm Airport (FRA)***   Pick-up times: 9:00 am – 19:30 pm |                |
|------------------------------|--|----------------|
| 1 person/Route – Residence   | one way €165   | both ways €320 |
| 1 person/Route – Host family | one way €190   | both ways €370 |

\*\*\*Other pick-up locations on request (Heidelberg main station, Mannheim main station, Hahn airport, Stuttgart airport, Baden-Baden airport, etc.)

\*\*\*\*Validity or subject to change depending on cost developments

## ACCOMMODATION CATEGORIES

| Category Residence | Name       | Description  | Heidelberg district                                  |
|--------------------|------------|--|--|
| A                  | Turner     | Shower and WC are in the hallway, communal kitchen   | (Rohrbach 2,5 km from the school)                    |
|                    | Schmitt    |  | Kirchheim (2.5 km from the school)                   |
|                    | Concordia  |  | Südstadt (1.5 km from the school)                    |
|                    | Franz-Marc |  | Südstadt (2 km from the school)                      |
| B                  | Schmitt    | Shower is in the room, WC in the corridor, communal kitchen  | Kirchheim (2.5 km from the school)                   |
| B+                 | Turner     | Shower and WC en suite, shared kitchen   | Rohrbach (2.5 km from the school)                    |
| C                  | März       | The hall of residence is located in Heidelberg's Old Town, two rooms share a shower, WC and kitchenette. | Old Town (500 m from the school)                     |
| D                  | F+U Campus | Good residential location (Bergheim), small flats with shower, WC, shared kitchen                        | Bergheim (at the main station, 1 km from the school) |
| E                  | F+U Campus | Good residential location (Bergheim and old town), small flats with shower, WC and kitchenette en suite. | Bergheim (at the main station, 1 km from the school) |
|                    | März       |  | Old Town (500 m from the school)                     |

# MAP



- 1 Academy of Languages
- 2 Concordia
- 3 Franz-Marc
- 4 Schmitt
- 5 Turner
- 6 März
- 7 F+U Campus (dormitory)



click here for more information



## CONTACT

### Academy of Languages gGmbH

Hauptstraße 1  
D-69117 Heidelberg

Phone +49 6221 7050-4048

Fax +49 6221 23452  
sprachen.aol@fuu.de

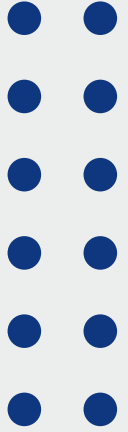
### Telephone service, 24/7


+49 6221 9120-38





The prices and services stated are valid until a new brochure is published. All information is without guarantee.

The German and English versions of the price list are authoritative. All other translations are for guidance only in the respective language.



 @fuu\_academy\_of\_languages

 F+U Academy of Languages

 F+U Academy of Languages Heidelberg

[academy-languages.de](http://academy-languages.de)